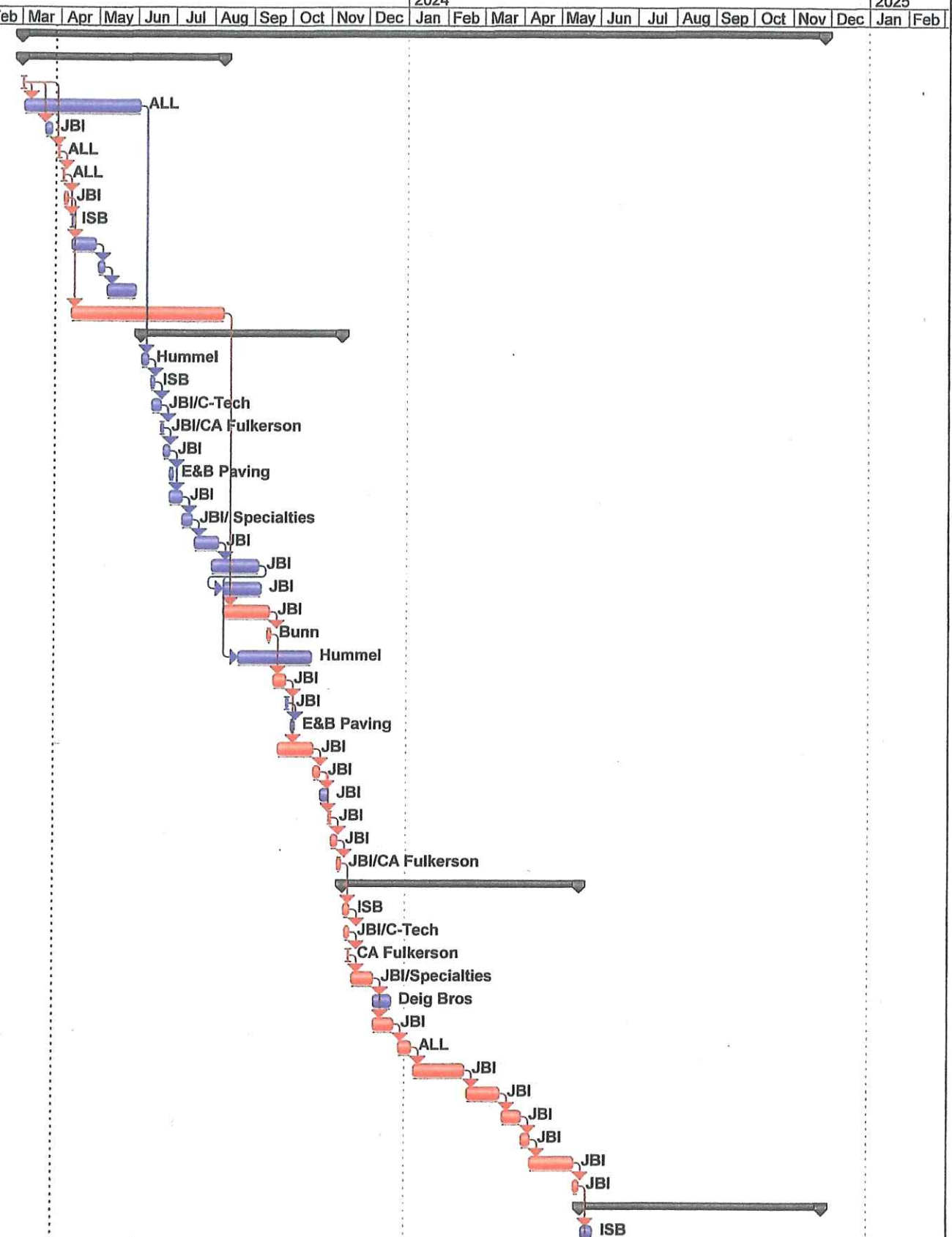


ID	Task Name	Duration	Start	Finish	Predecessors	Resource Names	2024												2025						
							Feb	Mar	Apr	May	Jun	Jul	Aug	Sep	Oct	Nov	Dec	Jan	Feb						
1	R-39921 SR 66 (LLOYD) & EPWORTH INTERSECTION IMPROVEMENT	432 days	Thu 3/2/23	Tue 11/26/24																					
2	PRELIMINARY - PRE-CONSTRUCTION	108 days	Thu 3/2/23	Tue 8/8/23																					
3	Notice to Proceed	1 day	Thu 3/2/23	Thu 3/2/23																					
4	Material Procurement	63 days	Fri 3/3/23	Fri 6/2/23	3	ALL																			
5	Preliminary Surveying - Staking ROW and Construction Limits	5 days	Mon 3/20/23	Fri 3/24/23	3FS+11 days	JB																			
6	Partnering Meeting (Kick-off)	1 day	Thu 3/30/23	Thu 3/30/23	3FS+19 days	ALL																			
7	Pre-Construction Meeting	1 day	Mon 4/3/23	Mon 4/3/23	6FS+1 day	ALL																			
8	Preliminary Surveying - Complete ROW Staking	3 days	Tue 4/4/23	Thu 4/6/23	7	JB																			
9	Install Preliminary Road Construction Signs	1 day	Mon 4/10/23	Mon 4/10/23	7FS+3 days	ISB																			
10	UTILITY - CenterPoint Energy - Distribution (21 Calendar Days)	15 days	Mon 4/10/23	Fri 4/28/23	8																				
11	UTILITY - Astound Broadband (7 Calendar Days)	5 days	Mon 5/1/23	Fri 5/5/23	10																				
12	UTILITY - Spectrum (21 Calendar Days)	15 days	Mon 5/8/23	Tue 5/30/23	11																				
13	UTILITY - Town of Chandler Water (120 Calendar Days)	82 days	Mon 4/10/23	Tue 8/8/23	8																				
14	PHASE 1 - SR 66 WESTBOUND/NORTH EPWORTH/RAMP PR-B	110 days	Mon 6/5/23	Fri 11/10/23																					
15	Install Signal at Grimm Road	5 days	Mon 6/5/23	Fri 6/9/23	4	Hummel																			
16	Install Phase 1 Traffic Control	3 days	Mon 6/12/23	Wed 6/14/23	15	ISB																			
17	Install Temp Barrier Wall & Crash Cushions	5 days	Tue 6/13/23	Mon 6/19/23	16FS-2 days	JB/C-Tech																			
18	Install Phase 1 Erosion Control Silt Fence & Check Dams	2 days	Tue 6/20/23	Wed 6/21/23	17	JB/CA Fulkerson																			
19	Excavation/SG Treatment & Stone for Shoulder Strengthening	3 days	Thu 6/22/23	Mon 6/26/23	18	JB																			
20	HMA for Shoulder Strengthening/HMA for Widening	3 days	Tue 6/27/23	Thu 6/29/23	19	E&B Paving																			
21	Strip Topsoil/Stockpile & Misc Clearing/Demo	5 days	Tue 6/27/23	Thu 7/6/23	19	JB																			
22	Break Concrete / Pavement Removal East of Epworth	6 days	Fri 7/7/23	Fri 7/14/23	21	JB/ Specialties																			
23	Initial Storm Drainage (Install Pump Around)	15 days	Mon 7/17/23	Fri 8/4/23	22	JB																			
24	Rough Excavation - Balance Site	25 days	Mon 7/31/23	Tue 9/5/23	23FS-5 days	JB																			
25	Subgrade Treatment / PCCP Subbase (Partial)	20 days	Wed 8/9/23	Thu 9/7/23	24FS-18 days	JB																			
26	Remaining Storm Drainage & Type 4 Pipe	25 days	Wed 8/9/23	Thu 9/14/23	13	JB																			
27	Install Underdrains	3 days	Wed 9/13/23	Fri 9/15/23	26FS-2 days	Bunn																			
28	Phase 1 Traffic Signal/Lighting Work/Overhead Signs	40 days	Mon 8/21/23	Tue 10/17/23	24FS-10 days	Hummel																			
29	Complete PCCP Subbase & Fine Grade for Paving	8 days	Mon 9/18/23	Wed 9/27/23	27	JB																			
30	Curb & Gutter Epworth / Misc Concrete	2 days	Thu 9/28/23	Fri 9/29/23	29	JB																			
31	QC/QA - HMA Epworth	3 days	Mon 10/2/23	Wed 10/4/23	30	E&B Paving																			
32	QC/QA - PCCP 12-IN Mainline	20 days	Fri 9/22/23	Thu 10/19/23	29FS-4 days	JB																			
33	QC/QA - PCCP 11-IN Ramp	3 days	Fri 10/20/23	Tue 10/24/23	32	JB																			
34	Center Median Concrete	5 days	Wed 10/25/23	Tue 10/31/23	33	JB																			
35	Install Shoulder Stone	2 days	Wed 11/1/23	Thu 11/2/23	33FS+5 days	JB																			
36	Saw & Seal Joints	3 days	Fri 11/3/23	Tue 11/7/23	35	JB																			
37	Finish Grade / Temporary Seed & Straw	3 days	Wed 11/8/23	Fri 11/10/23	36	JB/CA Fulkerson																			
38	PHASE 2 - SR 66 INTERIOR LANES & CENTER MEDIAN	128 days	Mon 11/13/23	Fri 5/17/24																					
39	Switch Traffic to Phase 2	5 days	Mon 11/13/23	Fri 11/17/23	37	ISB																			
40	Relocate Temporary Barrier Wall & Crash Cushions	4 days	Tue 11/14/23	Fri 11/17/23	39FS-4 days	JB/C-Tech																			
41	Install Phase 2 Erosion Control (Inlet Protection)	1 day	Fri 11/17/23	Fri 11/17/23	40FS-1 day	CA Fulkerson																			
42	Break Concrete / Pavement & Center Median Removal	10 days	Mon 11/20/23	Wed 12/6/23	41	JB/Specialties																			
43	Trenchless Pipe Installation (Structure #1017)	10 days	Thu 12/7/23	Wed 12/20/23	42	Deig Bros																			
44	Initial Storm Drainage	12 days	Thu 12/7/23	Fri 12/22/23	42	JB																			
45	WINTER SHUTDOWN	7 days	Wed 12/27/23	Fri 1/5/24	44	ALL																			
46	Subgrade Treatment / PCCP Subbase (Partial)	30 days	Mon 1/8/24	Fri 2/16/24	45	JB																			
47	Remaining Storm Drainage & Type 4 Pipe	20 days	Mon 2/19/24	Fri 3/15/24	46	JB																			
48	Complete PCCP Subbase & Fine Grade for Paving	10 days	Mon 3/18/24	Mon 4/1/24	47	JB																			
49	QC/QA - PCCP 12-IN Mainline	5 days	Tue 4/2/24	Mon 4/8/24	48	JB																			
50	Center Median Concrete	25 days	Tue 4/9/24	Mon 5/13/24	49	JB																			
51	PCCP Patching Full-Depth	4 days	Tue 5/14/24	Fri 5/17/24	50	JB																			
52	PHASE 3 - SR 66 EASTBOUND/SOUTH EPWORTH/RAMP PR-D	130 days	Mon 5/20/24	Tue 11/26/24																					
53	Switch Traffic to Phase 2	5 days	Mon 5/20/24	Tue 5/28/24	51	ISB																			

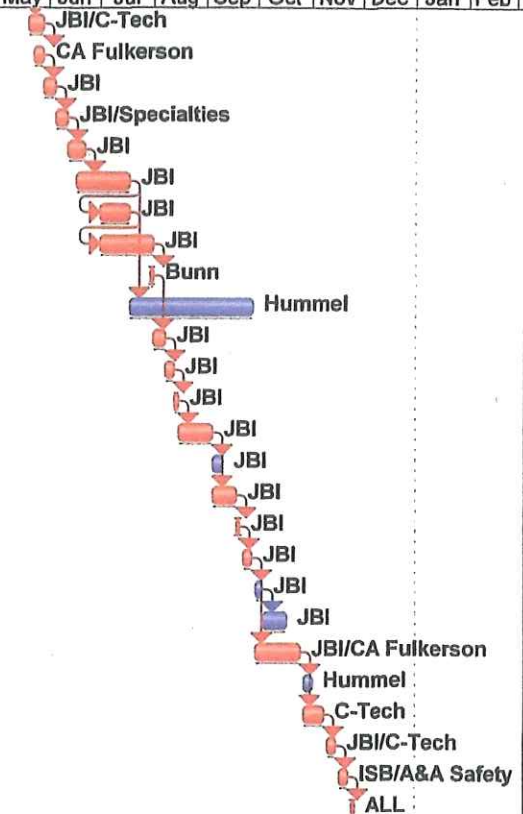


Project: R-39921 Warrick Co Baseline  
Date: Tue 3/28/23

Task		Milestone		Rolled Up Critical Task		Split		Group By Summary	
Critical Task		Summary		Rolled Up Milestone		External Tasks		Deadline	
Progress		Rolled Up Task		Rolled Up Progress		Project Summary			



ID	Task Name	Duration	Start	Finish	Predecessors	Resource Names	2024												2025								
							Feb	Mar	Apr	May	Jun	Jul	Aug	Sep	Oct	Nov	Dec	Jan	Feb								
54	Relocate Temporary Barrier Wall & Crash Cushions	5 days	Mon 5/20/24	Tue 5/28/24 51		JB/C-Tech																					
55	Install Phase 3 Erosion Control Silt Fence & Check Dams	2 days	Thu 5/23/24	Tue 5/28/24 54FS-2 days		CA Fulkerson																					
56	Strip Topsoil/Stockpile & Misc Clearing/Demo	5 days	Wed 5/29/24	Tue 6/4/24 55		JBI																					
57	Break Concrete / Pavement Removal	5 days	Wed 6/5/24	Tue 6/11/24 56		JBI/Specialties																					
58	Initial Storm Drainage (Install Pump Around)	8 days	Wed 6/12/24	Fri 6/21/24 57		JBI																					
59	Rough Excavation - Balance Site	20 days	Mon 6/17/24	Wed 7/17/24 58FS-5 days		JBI																					
60	Subgrade Treatment / PCCP Subbase (Partial)	10 days	Mon 7/1/24	Wed 7/17/24 59FS-10 days		JBI																					
61	Remaining Storm Drainage & Type 4 Pipe	20 days	Mon 7/1/24	Wed 7/31/24 60FS-10 days		JBI																					
62	Install Underdrains	2 days	Tue 7/30/24	Wed 7/31/24 61FS-2 days		Bunn																					
63	Phase 1 Traffic Signal/Lighting Work/Overhead Signs	50 days	Thu 7/18/24	Fri 9/27/24 59		Hummel																					
64	Complete PCCP Subbase & Fine Grade for Paving	5 days	Thu 8/1/24	Wed 8/7/24 62		JBI																					
65	Curb & Gutter Epworth / Misc Concrete	3 days	Thu 8/8/24	Mon 8/12/24 64		JBI																					
66	QC/QA - HMA Epworth	3 days	Tue 8/13/24	Thu 8/15/24 65		JBI																					
67	QC/QA - PCCP 12-IN Mainline	12 days	Fri 8/16/24	Wed 9/4/24 66		JBI																					
68	QC/QA - PCCP 11-IN Ramp	4 days	Thu 9/5/24	Tue 9/10/24 67		JBI																					
69	Center Median Concrete	10 days	Thu 9/5/24	Wed 9/18/24 67		JBI																					
70	Install Shoulder Stone	2 days	Thu 9/19/24	Fri 9/20/24 69		JBI																					
71	Ramp PR-B & PR-D Tie-Ins	5 days	Mon 9/23/24	Fri 9/27/24 70		JBI																					
72	Saw & Seal Joints	4 days	Mon 9/30/24	Thu 10/3/24 71		JBI																					
73	Break Concrete / Remove Old Ramps	10 days	Fri 10/4/24	Thu 10/17/24 72		JBI																					
74	Finish Grade/ Permanent Seed (Including Detention Pond)	20 days	Mon 9/30/24	Fri 10/25/24 71		JBI/CA Fulkerson																					
75	Complete Sheet Signs	5 days	Mon 10/28/24	Fri 11/1/24 74		Hummel																					
76	Complete Guardrail & Crash Attenuators	10 days	Mon 10/28/24	Fri 11/8/24 74		C-Tech																					
77	Remove Temporary Barrier Wall & Crash Cushions	5 days	Mon 11/1/24	Fri 11/15/24 76		JB/C-Tech																					
78	Permanent Epoxy Striping	5 days	Mon 11/18/24	Fri 11/22/24 77		ISB/A&A Safety																					
79	Clean-up & Open all areas to traffic/Turn on Signals	2 days	Mon 11/25/24	Tue 11/26/24 78		ALL																					



Project: R-39921 Warrick Co Baseline  
Date: Tue 3/28/23

Task		Milestone		Rolled Up Critical Task		Split		Group By Summary	
Critical Task		Summary		Rolled Up Milestone		External Tasks		Deadline	
Progress		Rolled Up Task		Rolled Up Progress		Project Summary			